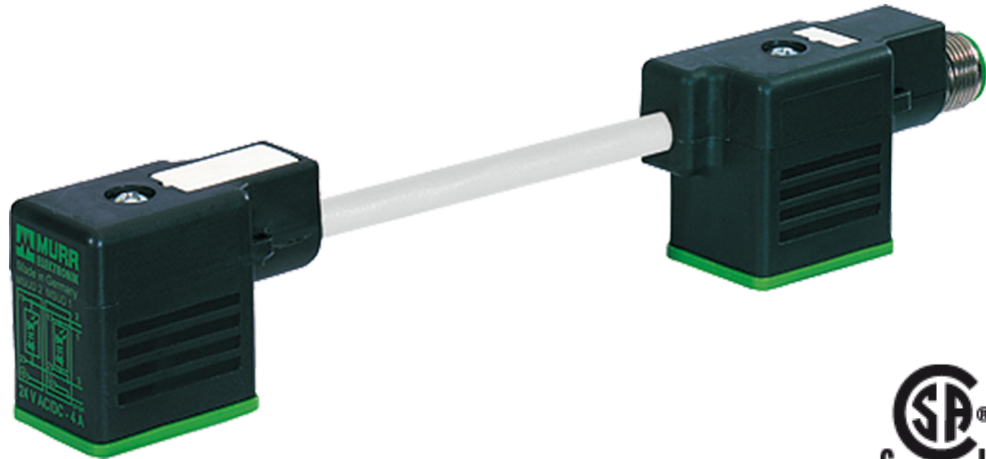


# Dual Solenoid M12 Quick Disconnect Cable



## Description

M12 Male connector  
 Valve Form BI 11 mm  
 PUR-JZ 3x0

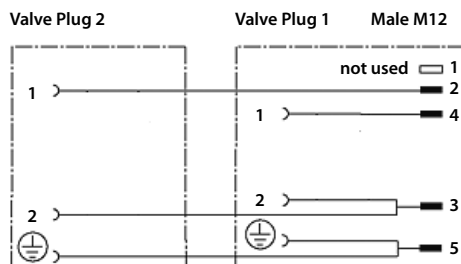
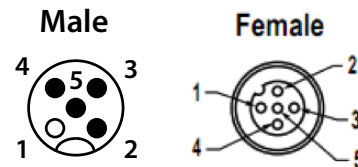
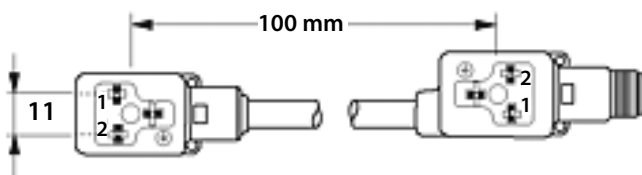
## Specifications

Operating voltage	125 V AC/DC/ 4A
Locking of ports	M3 (recommended torque 0.4 Nm)

## Agency Listing

CSA
UL

## Schematic



- 1 = Brown (Not Used)
- 2 = White (Valve Plug 1)
- 3 = Blue (Neutral)
- 4 = Black (Valve Plug 2)
- 5 = Gray (GND)