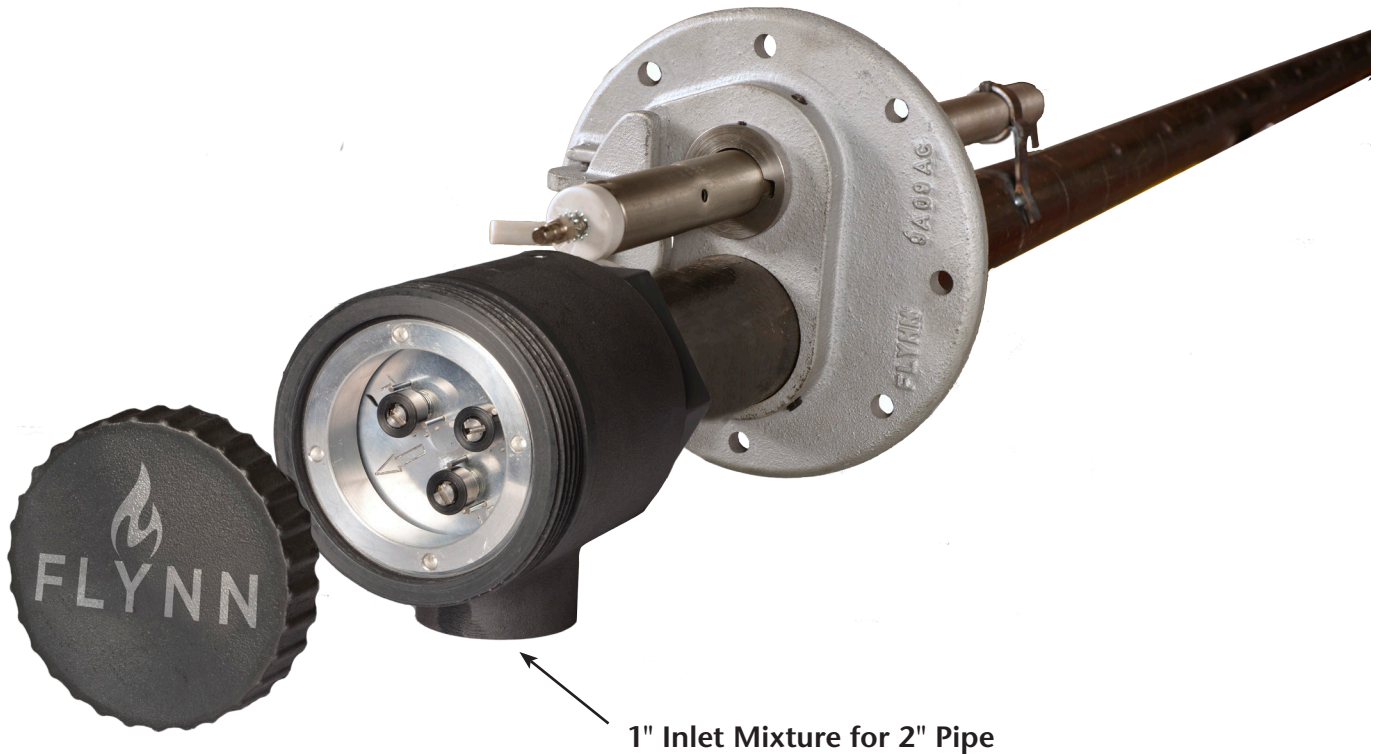
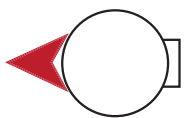


## TRI ZONE Adjustable Burner - 2"

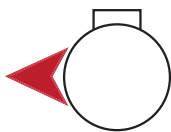


- BTU rating 160.000 BTU nominal for 2" pipe
- Individual near, intermediate and opposite adjustment
- Direct replacement for existing similar styles
- Suitable for use with natural gas, propane and butane

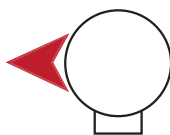
LEFT HAND FIRE  
180° INLET



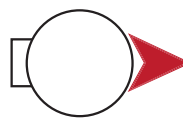
LEFT HAND FIRE  
270° INLET



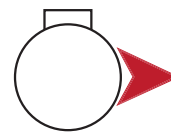
LEFT HAND FIRE  
90° INLET



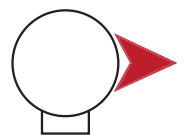
RIGHT HAND FIRE  
180° INLET



RIGHT HAND FIRE  
270° INLET

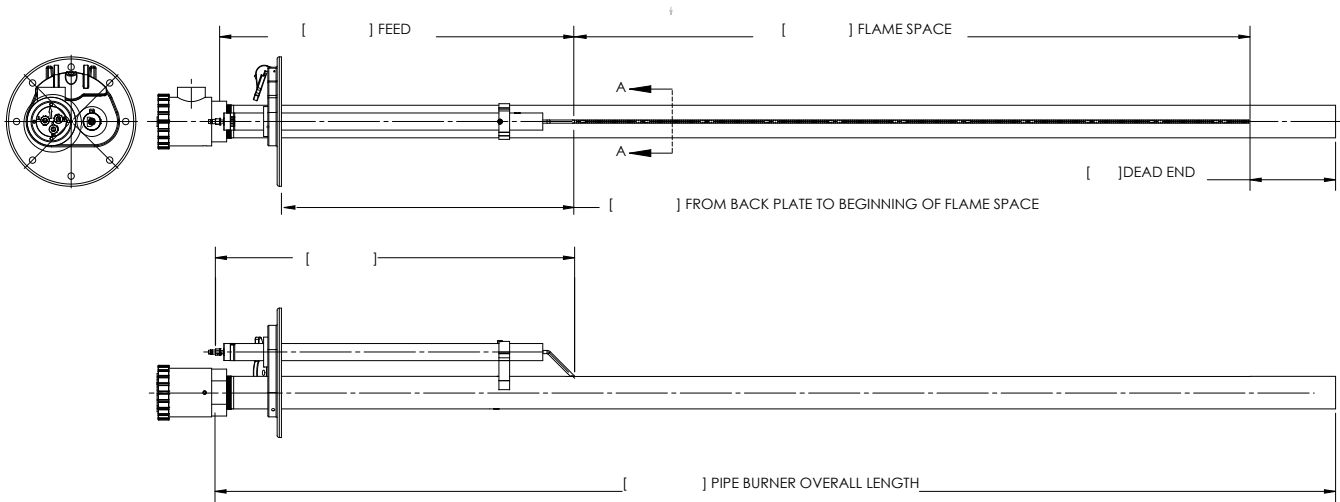


RIGHT HAND FIRE  
90° INLET



*Select the firing and inlet orientation on the next page*

# TRI ZONE Adjustable Burner - 2"



ITEM NO	PART NUMBER	DESCRIPTION	QTY
1	see table below*	BURNER PLATE	1
2	089092	ELECTRODE IGNITION BENT TIP	1
3	303317	ELECTRODE BUSHING	1
4	085269	ELECTRODE BRACKET	1

*BURNER PLATE			
PIPE SIZE	ANGLE	FLAME DIRECTION	PART NUMBER
2"	90°	RIGHT	096557
2"	90°	LEFT	096556
2"	45°	RIGHT	096562
2"	45°	LEFT	096561